



pronovaTM·O₂
automated prone therapy system

QUICK REFERENCE GUIDE

For Clinical or Technical Support Call
1.855.ASK.TURN
(1-855-275-8876)



Important Information

This Quick Reference Guide is meant to supplement the Instructions for Use Manual (IFU 100909) and in person training provided by Turn Medical Personnel and should not be relied upon solely for product use and training purposes. Specific Indications, Contraindications, Warnings, Precautions, and Safety Information exist for the Pronova-O₂TM Automated Prone Therapy System which are not fully covered in this Quick Reference Guide. It is important for users to read and familiarize themselves with the IFU and to consult the treating physician prior to product placement. Individual patient conditions may vary. Contact Turn Medical to request product education, training, or a copy of the IFU at 1.855.ASK.TURN (1-855-275-8876).



Indications for Use

The Pronova-O₂TM Automated Prone Therapy System is designed to treat and prevent pressure injuries and to assist in the management of patients experiencing pulmonary distress and/or complications due in part to patient immobility. Such pulmonary distress or complications can arise in immobile patients suffering from pneumonia, sepsis and ventilatory associated events, among others.

Contraindications

- Patient weight below 88 lbs./40 kg
- Patient weight above 400 lbs./181.4 kg
- Patient height below 4'6" (137.1 cm)
- Patient height above 6'6" (198.1 cm)
- Unstable spine (cervical, thoracic, lumbar)

Prone ONLY:

- Skull or severe facial fractures
- Uncontrolled Intracranial Pressure (ICP)
- Cervical and/or skeletal traction

Patient Preparation for Placement

The following items describe preparations and considerations to prepare the patient prior to Pronova-O₂™ placement.

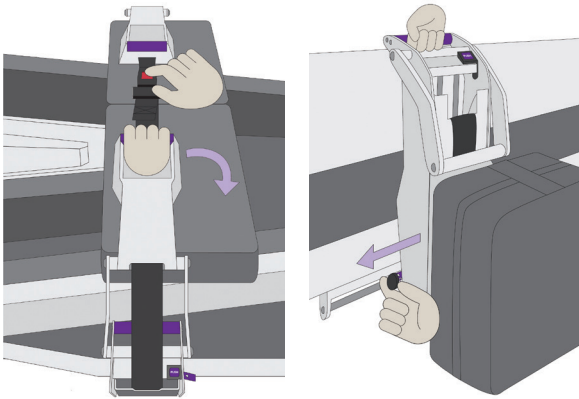
- Prepare room to allow for patient transfer from left side to facilitate safe transfer of Critical Lines through open side of Head Hoop.
- Remove gown, allowing for privacy prior to transfer.
- Use of hard plastic Endotracheal Tube (ETT) securement devices are not recommended for use in the Prone Position. Consult with Respiratory Therapist and/or Attending Physician or Prescriber regarding alternative ETT securement methods.
- Secure patient's hair to prevent catching during rotation on surface.
- Remove any piercings to reduce risk for skin breakdown.
- Properly dress and secure any skin injury or surgical sites.
- Consult WOCN as appropriate prior to placement to discuss and plan to reduce risk for skin breakdown.
- Consider high pressure points and prophylactic dressing for cheeks/face and chest among others.
- Detach any non-essential equipment to prepare for transfer. (ie: SCDs, enteral feedings NG suction, among others). Follow hospital policy and protocol.
- Gather and consider the following supplies as needed:
 - Line extensions-Invasive lines, arterial lines, chest tubes, etc.
 - Eye lubricant
 - Electrodes for EKG monitoring posteriorly
 - Slide board in preparation for transfer

Preparation of Pronova-O₂™ for Patient Placement

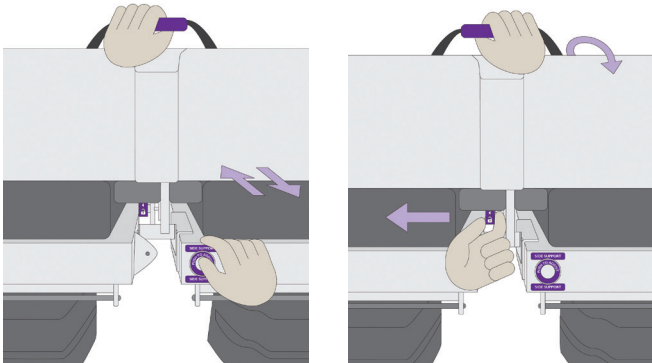
This section describes preparations and considerations to prepare the Pronova-O₂™ surface for placement.

1. Plug into properly grounded outlet.
2. Gather IntelliDerm™ Face Pack, Chest Wedge, and Abdominal Sling, place on surface and zero scale.
3. Clear History: Select Begin New Patient from settings menu.
4. Ensure Critical Line Management System is secured and installed on Head Hoop.
5. Open Head Hoop.
6. Lower and stow Head Side Supports, pull knob to rotate and lower.
7. Remove Pelvic Pads from Pelvic Prone Support.
8. Lower and stow Prone Surface Supports **(see images)**.
 1. Unbuckle and rotate surface to attach to prone support arm.
 2. Pull knob on left side bottom of prone arm to lower parallel to surface.
 3. Press Prone Support to stow beneath surface.
9. Unbuckle Shin Slings.
10. Lower and stow Side Support Panels **(see images)**.
 1. Press button on side of frame to pull outward to edge of surface.
 2. Pull knob under center of panel and lift handle to rotate outward and down beneath surface.
11. Lower and stow Foot Rests.
12. Lower and stow Inner Leg Support.
13. Lift Accessory Rack.
14. Lock brakes.
15. Ensure Lock Pin is in locked position.

8. Lower and stow Prone Surface Supports.



10. Lower and stow Side Support Panels.



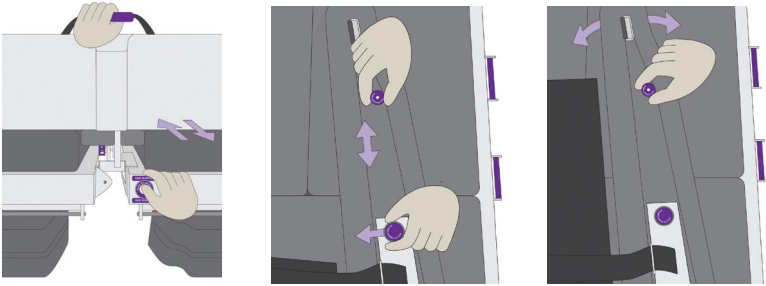
Patient Transfer and Securement on Pronova-O₂TM

The following section reviews the steps for transferring and securing the patient in preparation for initiating prone or supine therapy.

 **Ensure at least two clinicians remain at bedside when side supports are stowed, and patient is on the surface.**

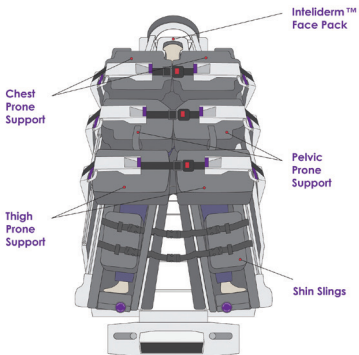
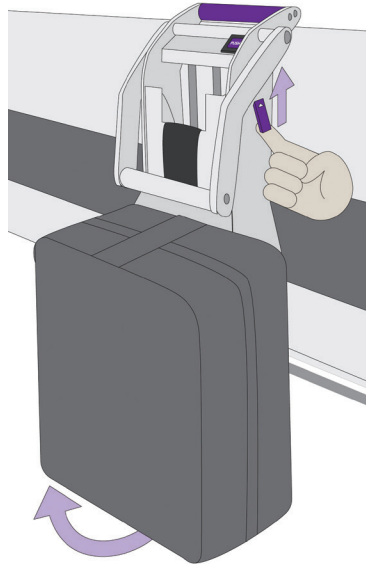
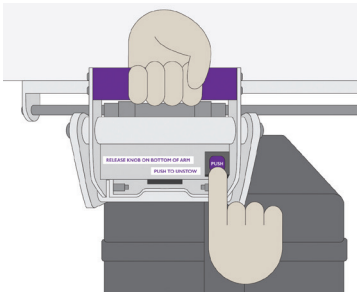
1. Ensure Lock Pin is fully secured in locked position.
2. Ensure brakes on both surfaces are set in locked position.
3. Gather appropriate staff and equipment for transfer.
4. Transfer patient, center patient on surface, follow all facility protocols.
5. Raise and adjust Head Side Supports, center ears.
6. Ensure Head Hoop is open.
7. Secure invasive lines on Critical Line Management System or Accessory Rack and close hoop.
8. Raise Inner Leg Support, buckle inner leg securement straps.
9. Secure Foot Rests.
10. Raise, secure and adjust Side Supports (**see images**).
 1. Use handle on center of panel to raise to surface.
 2. Press button on side of frame and push inward to secure firmly against patient.
 3. Consider lengthening (see image) or angling inward/outward (see image) based on patient size.
11. Close snaps to secure Arm Slings.
12. Buckle Shin Slings.
13. Place and connect IntelliDermTM Chest Wedge.
14. Secure Abdominal Sling and Pelvic Pads.
15. Secure and connect IntelliDermTM Face Pack.
16. Raise and buckle Prone Support Surfaces (**see images**).
 1. Press "Push" label just below handle to release support and pull fully out.
 2. Lift support upward and rotate against frame until locked in place.
 3. Lift lever on right side of prone arm to release surface.
 4. Lift surface to rest over the patient based on patient body type:
 - Lower leg support (over thigh or shin, avoid knees)
 - Pelvic support (over pelvis)
 - Chest support (slide to highest point)
17. Turn on IntelliDermTM (Microclimate tab).

10. Raise, secure and adjust Side Supports



Adjust side support to properly secure patient on surface. Patient may shift during rotation. Re-assess securement often and tighten side supports against body as needed. Adjustment can be made at any point in rotation.

16. Raise and buckle Prone Support Surfaces



Initiate Therapy



Initiate Automated Prone Position

The following section reviews the steps to initiate the Automated Prone position.

1. Pull Lock Pin fully out to unlocked position, or press Stop if surface is in rotation.
2. Press Prone Therapy tab.
3. Input Physician orders.
4. Input Prone Direction (toward ventilator).
5. Press Continue.
6. Verify items on Checklist.
7. Press and hold Prone Patient.
8. Once 0° prone is reached, consider placing patient in Reverse Trendelenberg using Hand Control or Home Screen.
9. Initiate Prone Rotational Therapy (Refer to Page 10, step 2).



Two clinicians should be present to observe patient lines, tubes, and vital signs during initial rotation into the Prone Position.



Rotation into the Prone Position should always be set to rotate towards the ventilator. Place ventilator tubing in Critical Line Management System opposite of ventilator to allow for slack during rotation.

Return to Supine Position

The following section reviews the steps to Return to the Supine Position.

1. Press Stop if surface is in rotation, or ensure Lock Pin is in unlocked position.
2. Lower surface by pressing Bed Height Down on Hand Control or Home Screen.
3. Close all open panels.
4. Press Supine Therapy tab.
5. Verify Physician orders .
6. Press Continue.
7. Verify Checklist.
8. Press and hold Supine Patient.
9. Insert Lock Pin to locked position or initiate Supine Rotational Therapy.



Observe all lines, tubes and vital signs during rotation. You can use the Hand Control at head of device to turn patient and assess critical lines if additional clinician cannot visualize all lines.

Initiate Rest at Angle

This section reviews the steps to utilize the Rest at Angle tab. Rest at Angle is utilized when procedures are required for the patient, such as patient care, line management, assessments, among others.

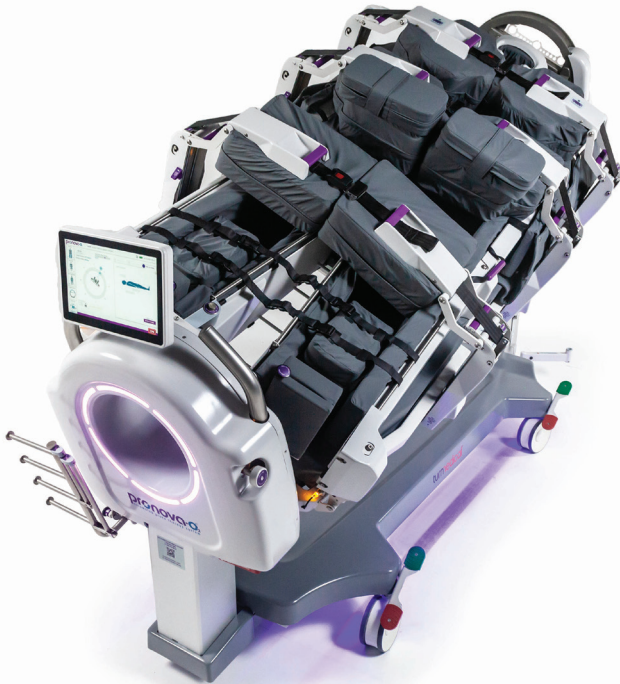
1. Press Stop if surface is in rotation, or ensure Lock Pin is in unlocked position.
2. Press Rest at Angle tab.
3. Set desired angle.
4. Set desired direction of rotation if applicable.
5. Press Continue.
6. Verify items on Checklist.
7. Press and hold Set Rest At Angle.

Initiate Prone or Supine Rotational Therapy

The following section reviews the steps to initiate Prone or Supine Rotational Therapy.

1. Press Stop if surface is in rotation, or ensure Lock Pin is in unlocked position.
2. Press Prone Therapy or Supine Therapy tab.
3. Input/Verify Settings.
4. Press Continue.
5. Verify Checklist.
6. Press Start Therapy.

⚠ Observe 2-3 full rotation cycles to ensure all lines and tubes are secure with enough slack to complete fully programmed turns. Add extensions or move equipment as needed.

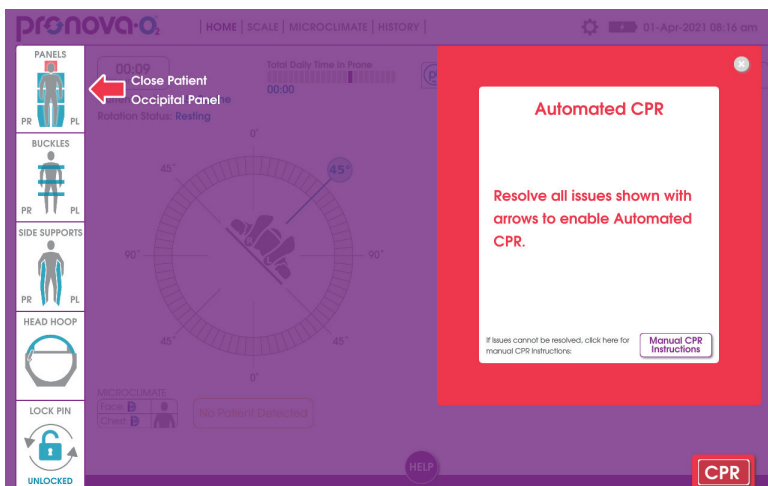


Automated CPR

The following section reviews the steps to initiate Automated CPR.

1. Close all open panels if in the Prone Position.
2. Press CPR and resolve any issues shown on status screen.
3. Press and hold CPR to rotate and lower surface to 0° Supine.
4. Monitor all invasive lines for rotation.
5. Engage Lock Pin in Locked position.
6. Place CPR board under patient for proper compressions.
7. Initiate CPR procedures per hospital/facility protocol.

! If there is an error with the sensors and all panels are closed to safely rotate patient into the Supine Position, proceed to Manual CPR/Manual Rotation procedures or press the Manual CPR Instructions button on the CPR screen.



Manual CPR/Manual Rotation



The device is designed with a rotation limiter safety feature that prevents the surface from rotating 360° in either direction. If the surface is rotated and the safety feature is reached, turn surface in opposite direction to reach 0° Supine.

1. Gather 3 or more clinicians, 2 to support frame, 1 to release manual CPR lever.
2. Place CPR board and close panels if in Prone Position.
3. Determine direction of rotation to Supine Position. (toward ventilator, opposite of rotation direction to Prone Position).
4. Monitor all invasive lines for rotation.
5. Guide surface to 0° Supine.
6. Engage Lock Pin in locked position.
7. Re-engage Manual CPR Lever.
8. Initiate CPR procedures per hospital/facility protocol, ensure CPR board placed for proper compressions.



Notes

Notes



Contact Information

For questions regarding the Pronova-O₂TM device, training, maintenance, single patient use items, service offerings or any additional information, please contact Turn Medical.

Website: www.turnmedical.com

Email: info@turnmedical.com

Phone: 1.855.ASK.TURN (1-855-275-8876)
24/7 Clinical and Technical Support



Turn Medical
WEBSITE



Pronova O₂
USER MANUAL

Turn MedicalTM, Pronova-O₂TM, and IntelliDermTM are trademarks of Turn Medical. Software in this product is Copyright 2021 Turn Medical. All rights are reserved. A copy of patents and/or patents pending can be found at Turnmedical.com.

NOTICE © 2021 Turn Medical. All rights are reserved. To support the intended use of the product described in this publication, the purchaser of the product is not permitted to copy this publication. No other use, reproduction, or distribution of this publication, or any part of it, is permitted without written permission from Turn Medical. For additional information on intended use of the products used in this publication please contact Turn Medical @ 1.855.ASK.TURN (1-855-275-8876) or email info@turnmedical.com.